



Tel: +8618357464511

Email: andrewhu@nb-yule.com

Add: No.666 Dongyi North Road, Zheng hai, NingBo,China



Nignbo Yule Import and Export Co., Ltd.

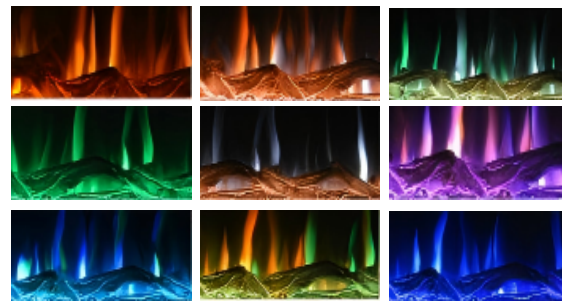
COMPANY PROFILE



Ningbo Yule Import & Export Co., Ltd. is located in Ningbo, Zhejiang, on the coast of the East China Sea. This city, which combines the charm of y and the vitality of international ports, gives the company a unique geographical advantage. Relying on Ningbo Zhoushan Port, a world-class port with the highest cargo throughput in the world, the company has a natural advantage of efficiency and convenience in international trade transportation, and can quickly and safely transport goods to all parts of the world.

As an emerging enterprise founded on the concept of "win-win cooperation", Ningbo Yule Import & Export Co., Ltd. has established in-depth cooperative relations with thirty or forty high-quality factories with an open and inclusive attitude. These factories are distributed in multiple industrial clusters, and with exquisite craftsmanship and strict quality control, they continue to output high-quality products for the company. The company has a wide range of business scope, covering small household appliances, kitchen supplies, daily necessities and groceries, etc., and is committed to meeting the diverse life consumption needs of global customers, and moving forward steadily on the international trade stage with excellent products and services.

WALL- MOUNTED SERIES

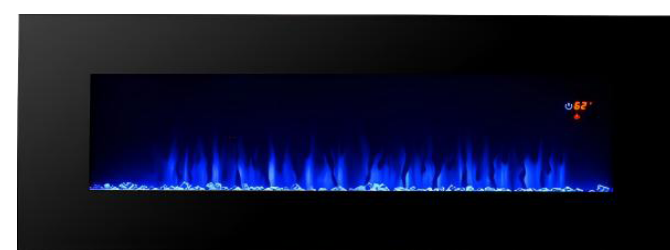


YL-IF1350T



| Modle No. | Heat Power | Prouduct Size (mm) | Packing Size (mm) | N.W.(Kg) | G.W.(Kg) |
|------------|--|--------------------|-------------------|----------|----------|
| YL-IF1350T | 900W/1800W for 220V-240V/50Hz; 750W/1500W for 120V/60Hz | 1270×121×502 | 1358×185×580 | 21 | 23 |

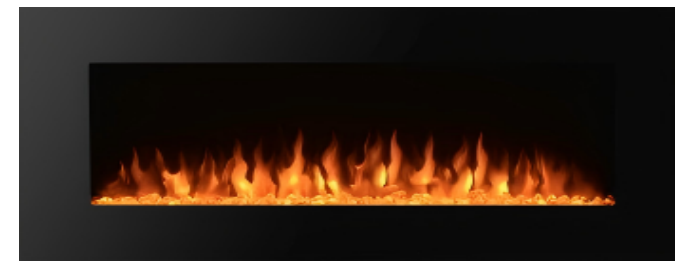
- 50"Wall Mounted Fireplace
- Carbon log fuel effect
- Flat tempered glass front panel
- Adjustable temperature settings form 62°F to 82°F(17°C-28°C)
- Adjustable flame brightness (L1 to L5)
- Timer offers automatic shut off from 1H to 8H
- Flame and stone bed with 9 changable colours
- Alternative manual control panel
- With touch panel control
- Fame effect can be used independently
- Remote control
- Vent at bottom of front panel
- With safety termal cut-off device



- 36"&40"&50"&60"&70"Wall Mounted Fireplace
- Crystal stone /log/pebble fuel effect
- Flat Tempered glass front panel
- LED lights with digital led display
- Alternative manual control panel
- 2 heat settings
- Adjustable flame brightness (L1 to L5)
- Timer offers automatic shut off frome 1H to 8H
- Adjustable temperature seetings from 62°F to 82°F(17°C-28°C)
- Stone bed and flame whith 3changable led colour
- Remote control
- With saferty cut-off device

YL-WF00FSB

| Modle No. | Heat Power | Prouduct Size (mm) | Packing Size (mm) | N.W.(Kg) | G.W.(Kg) |
|------------|--|--------------------|-------------------|----------|----------|
| YL-WF36FSB | 900W/1800W for 220V-240V/50Hz; 750W/1500W for 120V/60Hz | 915×120×466 | 1002×185×543 | 15.8 | 17.9 |
| YL-WF40FSB | | 1016×120×466 | 1104×185×543 | 16.8 | 19.2 |
| YL-WF50FSB | | 1270×120×466 | 1358×185×543 | 20.8 | 23.3 |
| YL-WF60FSB | | 1524×120×466 | 1612×185×543 | 23.6 | 26.6 |
| YL-WF70FSB | | 1778×120×466 | 1866×185×543 | 26.8 | 30.3 |



YL-WF1300

| Modle No. | Heat Power | Prouduct Size (mm) | Packing Size (mm) | N.W.(Kg) | G.W.(Kg) |
|-----------|--|--------------------|-------------------|----------|----------|
| YL-WF1336 | 900W/1800W for 220V-240V/50Hz; 750W/1500W for 120V/60Hz | 915×132×450 | 995×195×528 | 16.5 | 18.5 |
| YL-WF1340 | | 1016×132×450 | 1097×195×528 | 17.5 | 18.7 |
| YL-WF1350 | | 1270×132×450 | 1351×195×528 | 19.2 | 21 |
| YL-WF1360 | | 1524×132×450 | 1605×195×528 | 23.6 | 25.6 |
| YL-WF1370 | | 1778×132×450 | 1860×195×528 | 27.8 | 30.6 |

- 36"&40"&50"&60"&70"Wall Mounted fireplace
- Crystal stone /log/pebble fuel effect
- Flat tempered glass front panel
- LED lights
- Alternative manual control panel
- Adjustable flame brightness (L1 to L5)
- Timer offers automatic shut off frome 1Hto 8H
- Adjustable temperature seetings from 62°F to82°F(17°C-28°C)
- Stone bed and flame whthh 3chanble led colour
- Remote control including
- With saferty cut-off device

YL-WF1350

- 50"Wall Mounted Fireplace
- Carbon log fuel effect
- flat tempered glass front panel
- LED lights
- Alternative manual control panel
- with digital led display
- Coal bed with adjustable flame brightness (L1 to L5)
- Timer offers automatic shut off from 1H to 8H
- Adjustable temperature settings form 62°F to 82°F(17°C-28°C)
- Remote control
- Vent at bottom
- With safety cut-off device



| Modle No. | Heat Power | Prouduct Size (mm) | Packing Size (mm) | N.W.(Kg) | G.W.(Kg) |
|-----------|--|--------------------|-------------------|----------|----------|
| YL-WF1350 | 900W/1800W for 220V-240V/50Hz; 750W/1500W for 120V/60Hz | 1270×140×551 | 1346×200×635 | 20.3 | 22.3 |

YL-EF11BL



- 35" Wall mounted electric fireplace
- White pebble or Carbon log fuel effect
- Flat front tempered glass front panel
- Adjustable flame brightness
- Alternative manual control panel
- Flame effect can be used independently
- Remote control for choice
- with back led lights
- Safety thermal cut-off device
- With remote
- Plastic base is available

| Modle No. | Heat Power | Prouduct Size (mm) | Packing Size (mm) | N.W.(Kg) | G.W.(Kg) |
|-----------|--|--------------------|-------------------|----------|----------|
| YL-EF11BL | 900W/1800W for 220V-240V/50Hz; 750W/1500W for 120V/60Hz | 880×150×560 | 960×204×650 | 14.5 | 16.5 |

YL-EF11



- 26" & 35" Wall Mounted Fireplace
- Carbon log or Pebble fuel effect
- Black curved tempered glass front panel
- Adjustable flame brightness
- Alternative manual control panel
- Flame effect can be used independently
- Remote control for choice
- Safety thermal cut-off device
- With remote
- Plastic base is available

| Modle No. | Heat Power | Prouduct Size (mm) | Packing Size (mm) | N.W.(Kg) | G.W.(Kg) |
|-----------|--|--------------------|-------------------|----------|----------|
| YL-EF11A | 900W/1800W for 220V-240V/50Hz; 750W/1500W for 120V/60Hz | 880×150×560 | 960×204×650 | 14.5 | 16.5 |
| YL-EF11C | | 600×130×520 | 737×215×580 | 10.5 | 13.8 |

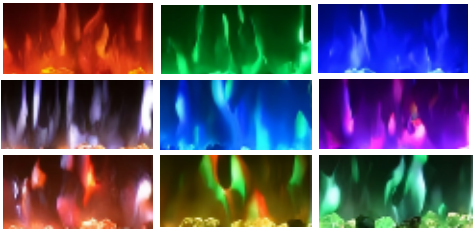
YL-EF28G



- 28" Wall Mounted Fireplace
- Carbon log fuel effect
- Flat tempered glass front panel
- LED lights
- Alternative manual control panel
- Coal bed with adjustable flame brightness (L1 to L5)
- 2 heat settings
- Remote control
- Vent at front
- With safety cut-off device

| Modle No. | Heat Power | Prouduct Size (mm) | Packing Size (mm) | N.W.(Kg) | G.W.(Kg) |
|-----------|--|--------------------|-------------------|----------|----------|
| YL-EF28G | 900W/1800W for 220V-240V/50Hz; 750W/1500W for 120V/60Hz | 711×207×438 | 795×260×515 | 15.6 | 17.8 |

YL-ZCR0013



- 40"&50"&60" Wall Mounted+Freestanding Fireplace
- Crystal fuel effect
- Flat steel and tempered glass for front panel
- Led lights
- Alternative manual control panel
- LED digital display
- Adjustable temperature settings from62°F to 82°F(17°C-28°C)
- Adjustable flame brightness (L1 to L5)
- With 9 different flame colour
- Adjust timer from 1H to 8H
- Flame and stonebed with 9 changable led colour
- Remot control
- Safety cut-off devic
- Feet is available (with metal feet)



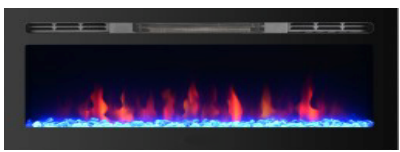
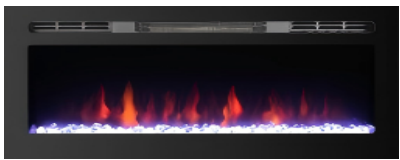
Metal feet

White cover

| Modle No. | Heat Power | Prouduct Size (mm) | Packing Size (mm) | N.W.(Kg) | G.W.(Kg) |
|------------|--|--------------------|-------------------|----------|----------|
| YL-ZCR4013 | 900W/1800W for 220V-240V/50Hz; 750W/1500W for 120V/60Hz | 1016×119×327 | 1118×203×427 | 17.7 | 21.4 |
| YL-ZCR5013 | | 1270×119×327 | 1372×203×427 | 21 | 25.5 |
| YL-ZCR6013 | | 1524×119×327 | 1626×203×427 | 25 | 27.3 |



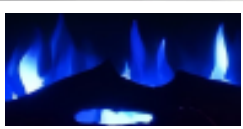
YL-IF1300B



- 31" & 32" & 36" Wall Recessed + Wall Mounted Fireplace
- Crystal stone & Carbon log fuel effect
- Flat tempered glass front panel
- LED lights
- Alternative manual control panel
- With digital display
- Adjustable temperature settings from 62°F to 82°F (17°C-28°C)
- Stone bed with 4 changeable LED colour
- With safety cut-off device

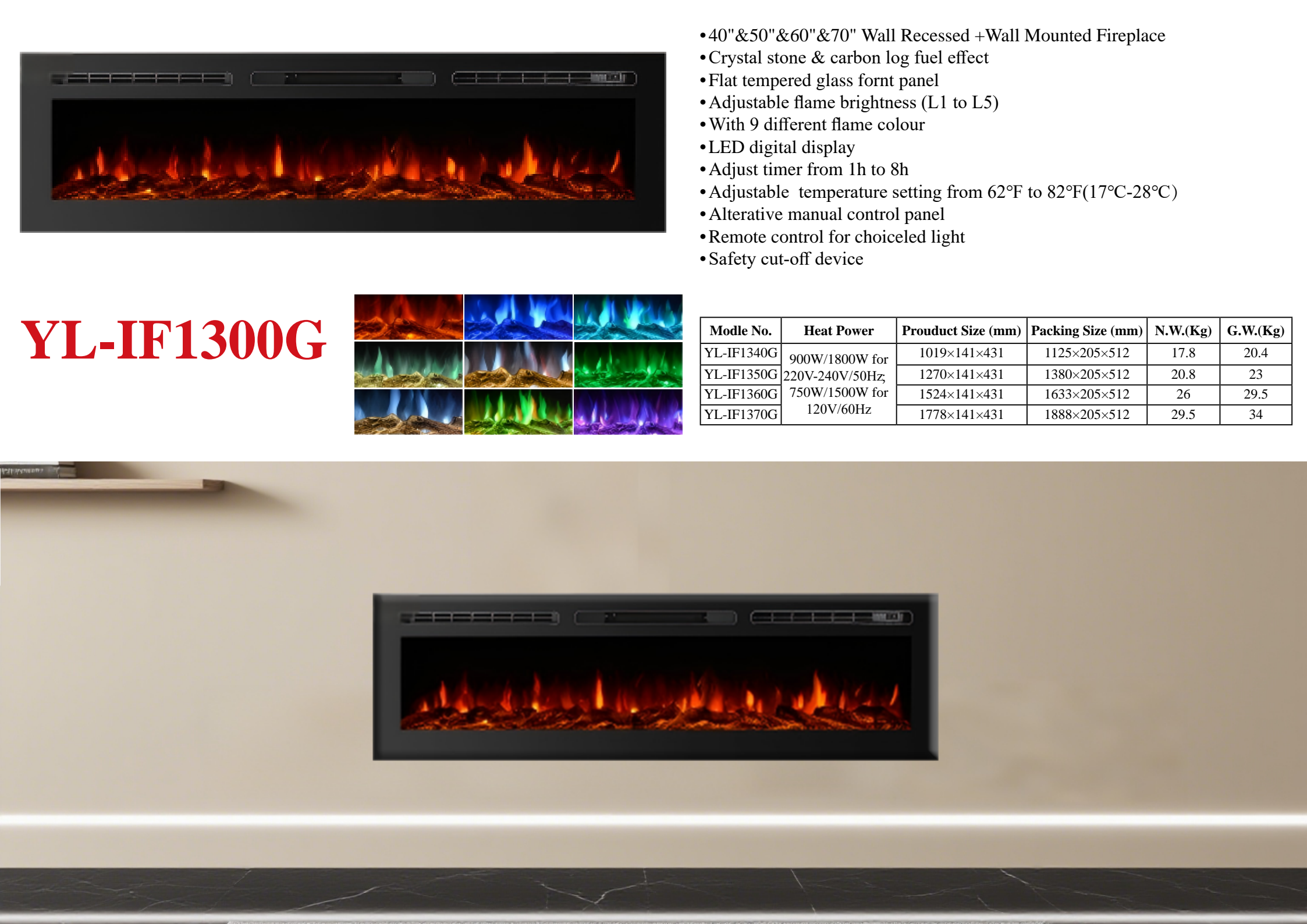
| Model No. | Heat Power | Product Size (mm) | Packing Size (mm) | N.W.(Kg) | G.W.(Kg) |
|------------|--|-------------------|-------------------|----------|----------|
| YL-IF1331B | 900W/1800W for 220V-240V/50Hz; 750W/1500W for 120V/60Hz | 809×142×425 | 857×190×487 | 11.75 | 13.2 |
| YL-IF1332B | | 860×142×425 | 905×190×487 | 11.9 | 13.7 |
| YL-IF1336B | | 950×151×450 | 1010×190×487 | 17.5 | 19.2 |

YL-IF00FSB



- 40" & 50" & 60" & 70" Wall Recessed + Wall Mounted Fireplace
- Crystal stone & carbon log fuel effect
- Flat tempered glass front panel
- LED lights
- Alternative manual control panel
- With digital LED display
- Adjustable flame brightness (L1 to L5)
- Adjust timer from 1h to 8h
- Adjustable temperature setting from 62°F to 82°F (17°C-28°C)
- Flame with 3 changeable LED colour
- Remote control
- With safety cut-off device

| Model No. | Heat Power | Product Size (mm) | Packing Size (mm) | N.W.(Kg) | G.W.(Kg) |
|------------|--|-------------------|-------------------|----------|----------|
| YL-IF40FSB | 900W/1800W for 220V-240V/50Hz; 750W/1500W for 120V/60Hz | 1016×120×466 | 1101×185×546 | 14.8 | 16.7 |
| YL-IF50FSB | | 1270×120×466 | 1368×185×546 | 15.8 | 18.2 |
| YL-IF60FSB | | 1524×120×466 | 1609×185×546 | 20.9 | 24.5 |
| YL-IF70FSB | | 1778×120×466 | 1863×185×546 | 24 | 26.7 |



YL-IF1300G



- 40" & 50" & 60" & 70" Wall Recessed + Wall Mounted Fireplace
- Crystal stone & carbon log fuel effect
- Flat tempered glass front panel
- Adjustable flame brightness (L1 to L5)
- With 9 different flame colour
- LED digital display
- Adjust timer from 1h to 8h
- Adjustable temperature setting from 62°F to 82°F (17°C-28°C)
- Alternative manual control panel
- Remote control for choiced light
- Safety cut-off device

| Model No. | Heat Power | Product Size (mm) | Packing Size (mm) | N.W.(Kg) | G.W.(Kg) |
|------------|--|-------------------|-------------------|----------|----------|
| YL-IF1340G | 900W/1800W for 220V-240V/50Hz; 750W/1500W for 120V/60Hz | 1019×141×431 | 1125×205×512 | 17.8 | 20.4 |
| YL-IF1350G | | 1270×141×431 | 1380×205×512 | 20.8 | 23 |
| YL-IF1360G | | 1524×141×431 | 1633×205×512 | 26 | 29.5 |
| YL-IF1370G | | 1778×141×431 | 1888×205×512 | 29.5 | 34 |



- 36"&40"&50"&60"&70" Wall Recessed +Wall Mounted + Freestanding (3 in 1)
- Crystal stone & Carbon log fuel effect
- Flat tempered glass fornt panel (balck or white color for your choice)
- LED lights
- Alterative manual control panel
- with digital LED display
- Adjustable flame brightness (L1 to L5)
- Adjust timer from 1h to 8h
- Flame and stone bed with 9 changale LED colour
- Remote control
- with safety cut-off device
- with meatal feet



YL-IF1300TCL



With Metal Feet



White Glass Panel



YL-SL50B



- 50"Wall Recessed+Wall Mounted Electric Fireplace
- Carbon log fuel effect
- 2 heat seeting
- Adjustable temperature seetings from 65°F to 100°F (18°C to 38°C)
- 9 kinds of flame colour
- Adjustable flame brightness (L1 to L5)
- Touch control panel
- Remote control availabel
- All LED technology
- Safety thermal cut-off device
- Flame can be used with or without hater

| Modle No. | Heat Power | Prouduct Size (mm) | Packing Size (mm) | N.W.(Kg) | G.W.(Kg) |
|-----------|--|--------------------|-------------------|----------|----------|
| YL-SL50B | 900W/1800W for 220V-240V/50Hz; 750W/1500W for 120V/60Hz | 1318×151×438 | 1368×195×495 | 27.8 | 32.3 |

INSERT SERIES



- 26"&28" Insert Fireplace
- 3 pcs of infrad quartz heating
- Carbon log fuel effect,3 colour flame and log colour
- Flat tempered glass front panel
- LED lights
- Alternative, manual control panel
- With digital led display
- Adjustable temperature settings from 62°F to 82°F(17°C-28°C)
- Timer offers automatic shut off from 1H to 6H
- Adjustable flame brightness (L1 to L6)
- Two sides with fake brick-wall decoration
- Remote control
- With safety cut-off device

| Modle No. | Heat Power | Prouduct Size (mm) | Packing Size (mm) | N.W.(Kg) | G.W.(Kg) |
|-----------|--------------------------------|--------------------|-------------------|----------|----------|
| YL-EF26 | 900W/1800W for 220V-240V/50Hz; | 643×236×473 | 705×295×550 | 13.9 | 15.8 |
| YL-EF28 | 750W/1500W for 120V/60Hz | 732×236×523 | 790×295×550 | 16.3 | 18.3 |

YL-WF2613L



- 26" Insert Fireplace
- Curved front panel
- Resin log fuel bed provide vivid effect
- Two-side brick wall design and deep coal bed
- All led technology
- Adjustable temperature settings from 65°F to 95°F(18°C-35°C)
- Adjustable timer settings from 1Hto 9H
- Coal bed with adjustable flame brightness (L1 to L9)
- With LED digital display
- Alternative manual control panel
- Remote control
- Safety thermal cut-off device

| Modle No. | Heat Power | Prouduct Size (mm) | Packing Size (mm) | N.W.(Kg) | G.W.(Kg) |
|------------|--|--------------------|-------------------|----------|----------|
| YL-WF2613L | 900W/1800W for 220V-240V/50Hz; 750W/1500W for 120V/60Hz | 704×229×539 | 735×246×608 | 16.5 | 18.5 |

YL-ZCR3843



- Insert Fireplace
- Carbon fuel effect
- Flat steel and tempered glass for front panel
- LED lights
- Alternative manual control panel
- With digital led display
- Adjustable temperature settings from 62°F to 82°F(17°C-28°C)
- Adjustable flame brightness (L1 to L5)
- Timer setting from 1H to 8H
- Remote control including
- With safety cut-off device
- With burning sound

| Modle No. | Heat Power | Prouduct Size (mm) | Packing Size (mm) | N.W.(Kg) | G.W.(Kg) |
|------------|--|--------------------|-------------------|----------|----------|
| YL-ZCR3843 | 900W/1800W for 220V-240V/50Hz; 750W/1500W for 120V/60Hz | 737×254×485 | 805×310×558 | 18.9 | 21.5 |

YL-EF26/YL-EF28



YL-F2325A/YL-F2625A



- 23" & 26" Insert Fireplace
- Flat front panel
- Resin log fuel bed provided vivid effect
- Two-side brick wall design and deep coal bed
- All led technology
- Adjustable temperature settings from 65°F to 95°F(18°C-35°C)
- Adjustable timer settings from 1H to 9H
- Coal bed with adjustable flame brightness (L1 to L9)
- With LED digital display
- Alternative manual control panel
- Remote control
- Safety thermal cut-off device

| Modle No. | Heat Power | Prouduct Size (mm) | Packing Size (mm) | N.W.(Kg) | G.W.(Kg) |
|-----------|--------------------------------|--------------------|-------------------|----------|----------|
| YL-F2325A | 900W/1800W for 220V-240V/50Hz; | 651×170×542 | 685×210×590 | 11 | 12.7 |
| YL-F2625A | 750W/1500W for 120V/60Hz | 710×170×542 | 750×210×590 | 12 | 13.8 |

YL-F2625



- 26" Insert Fireplace
- Curved front panel
- Resin log fuel bed provide vivid effect
- Two-side brick wall design and deep coal bed
- All led technology
- Adjustable temperature settings from 62°F to 82°F(17°C-28°C)
- Adjustable timer settings from 1H to 8H
- 5 settings for brightness of flame and fuelbed
- With LED digital display
- Alternative manual control panel
- Remote control
- Safety thermal cut-off device

| Modle No. | Heat Power | Prouduct Size (mm) | Packing Size (mm) | N.W.(Kg) | G.W.(Kg) |
|-----------|--|--------------------|-------------------|----------|----------|
| YL-F2625 | 900W/1800W for 220V-240V/50Hz; 750W/1500W for 120V/60Hz | 697×197×535 | 745×240×580 | 14.6 | 15.9 |



YL-EF23A



- 23" Insert fireplace
- Curved front panel
- Resin log fuel bed provide vivid effect
- Two-side brick wall design and deep coal bed
- All LED technology
- Adjustable temperature settings from 62°F to 82°F(17°C-28°C)
- Adjustable timer settings from 1H to 8H
- Coal bed with adjustable flame brightness (L1 to L5)
- With LED digital display
- Alternative manual control panel
- Remote control
- Safety thermal cut-off device

| Modle No. | Heat Power | Prouduct Size (mm) | Packing Size (mm) | N.W.(Kg) | G.W.(Kg) |
|-----------|--|--------------------|-------------------|----------|----------|
| YL-EF23A | 900W/1800W for 220V-240V/50Hz; 750W/1500W for 120V/60Hz | 637×205×502 | 690×240×560 | 13.5 | 14.7 |

YL-EF26D



- 26" Insert freplace
- Log flame effect
- Flat front panel
- Adjustable flame brightness
- Alternative manual control panel
- LED lights
- Remote control
- Rubber feet
- Safety thermal cut-off device

| Modle No. | Heat Power | Prouduct Size (mm) | Packing Size (mm) | N.W.(Kg) | G.W.(Kg) |
|-----------|--|--------------------|-------------------|----------|----------|
| YL-EF26D | 900W/1800W for 220V-240V/50Hz; 750W/1500W for 120V/60Hz | 724×145×534 | 805×195×620 | 10 | 12.7 |

YL-F2625U

- 26" Insert Firepalce
- Carbon log fuel effect
- Curved front panel
- Two-sides brick wall design and deep coal bed
- LED lights
- Alternative manual control panel
- With digital led display
- Two heat settings
- Adjustable flame brightness (L1 to L5)
- Coal bed and flame with three changable led colour
- Timer offers automatic shut off from 1 H to 6 H
- Adjustable temperature settings from 62°F to 82°F
- Remote control
- With safety cut off device



| Modle No. | Heat Power | Prouduct Size (mm) | Packing Size (mm) | N.W.(Kg) | G.W.(Kg) |
|-----------|--|--------------------|-------------------|----------|----------|
| YL-F2625U | 900W/1800W for 220V-240V/50Hz; 750W/1500W for 120V/60Hz | 693×215×540 | 724×248×587 | 12.5 | 14 |

YL-EF26B



- 26" Insert Fireplace
- Curved front panel
- Resin log fuel bed provide vivid effect
- All led technology
- Adjustable temperature settings from 62°F to 82°F(17°C-28°C)
- Adjustable timer settings from 1H to 8H
- Coal bed with adjustable flame brightness (L1 to L5)
- With LED digital display
- Alternative manual control panel
- Remote control
- Safety thermal cut-off device

| Modle No. | Heat Power | Prouduct Size (mm) | Packing Size (mm) | N.W.(Kg) | G.W.(Kg) |
|-----------|--|--------------------|-------------------|----------|----------|
| YL-EF26B | 900W/1800W for 220V-240V/50Hz; 750W/1500W for 120V/60Hz | 697×197×535 | 745×240×580 | 14.6 | 15.9 |

YL-EF23AKF



- 23 Insert Fireplace
- Log fuel effect
- Fat tempered glass front panel
- Adjustable flame brightness
- Alternative manual control panel
- With LED digital display
- Remote control for choice
- Adjustable temperature settings from 62°F to 82°F(17°C-28°C)
- Adjustable timer settings from 1H to 8H
- Coal bed with adjustable flame brightness (L1 to L5)
- With safety cut-off device

| Modle No. | Heat Power | Prouduct Size (mm) | Packing Size (mm) | N.W.(Kg) | G.W.(Kg) |
|------------|--|--------------------|-------------------|----------|----------|
| YL-EF23AKF | 900W/1800W for 220V-240V/50Hz; 750W/1500W for 120V/60Hz | 600×215×434 | 762×300×550 | 12.6 | 15.3 |

F R E E S T A N D I N G S E R I E S



YL-EF22



- Electric Stove
- Black or white color for your choice
- LED lights
- Log fuel effect
- Two heat settings
- Manual control
- With tip-over switch
- Safety cut-off device
- Flame can be operated with or without heat

| Modle No. | Heat Power | Prouduct Size (mm) | Packing Size (mm) | N.W.(Kg) | G.W.(Kg) |
|-----------|--|--------------------|-------------------|----------|----------|
| YL-EF22 | 900W/1800W for 220V-240V/50Hz; 750W/1500W for 120V/60Hz | 381×270×562 | 439×315×569 | 8.6 | 11.4 |



YL-EF22A



- Electric Stove
- LED lights
- Log fuel effect
- two door decoration
- Adjustable flame brightness
- Two heat settings
- Manual control
- With tip-over switch
- Safety cut-off device
- Flame can be operated with or without heat

| Modle No. | Heat Power | Prouduct Size (mm) | Packing Size (mm) | N.W.(Kg) | G.W.(Kg) |
|-----------|--|--------------------|-------------------|----------|----------|
| YL-EF22A | 900W/1800W for 220V-240V/50Hz; 750W/1500W for 120V/60Hz | 430×310×550 | 486×353×595 | 9.7 | 11 |

YL-EF22P



- Electric Stove
- LED lights
- Log fuel effect
- one door decoration
- Adjustable flame brightness
- Two heat settings
- Manual control
- With tip-over switch
- Safety cut-off device
- Flame can be operated with or without heat

| Modle No. | Heat Power | Prouduct Size (mm) | Packing Size (mm) | N.W.(Kg) | G.W.(Kg) |
|-----------|--|--------------------|-------------------|----------|----------|
| YL-EF22P | 900W/1800W for 220V-240V/50Hz; 750W/1500W for 120V/60Hz | 430×230×515 | 460×260×515 | 7.5 | 8.5 |



YL-EF22PM



- Electric Stove
- Log fuel effect
- two door decoration
- Adjustable flame brightness
- Two heat settings
- Manual control
- With tip-over switch
- Safety cut-off device
- Flame can be operated with or without heat

| Modle No. | Heat Power | Prouduct Size (mm) | Packing Size (mm) | N.W.(Kg) | G.W.(Kg) |
|-----------|--|--------------------|-------------------|----------|----------|
| YL-EF22PM | 900W/1800W for 220V-240V/50Hz; 750W/1500W for 120V/60Hz | 590×291×639 | 632×342×685 | 17 | 18 |



YL-SF23



- Electric Stove
- LED lights
- Curved front
- Carbon log fuel effect
- The iron wire mesh fixed on door
- Adjustable flame brightness
- Manual control
- Safety thermostat cut off device
- Attractive 3 sided open design for full view
- With tip over switch

| Modle No. | Heat Power | Prouduct Size (mm) | Packing Size (mm) | N.W.(Kg) | G.W.(Kg) |
|-----------|--|--------------------|-------------------|----------|----------|
| YL-SF23 | 900W/1800W for 220V-240V/50Hz; 750W/1500W for 120V/60Hz | 585×280×559 | 627×317×525 | 10.4 | 14.5 |

YL-SF1318



- Electric Stove
- Log flame effect
- Flat front
- Black iron effect finish
- Flame effect can be used independently
- 2 heat settings option
- Safety thermal cut-off device
- Attractive 3-sided open design for full view
- With tip over switch

| Modle No. | Heat Power | Prouduct Size (mm) | Packing Size (mm) | N.W.(Kg) | G.W.(Kg) |
|-----------|--|--------------------|-------------------|----------|----------|
| YL-SF1318 | 900W/1800W for 220V-240V/50Hz; 750W/1500W for 120V/60Hz | 590×291×639 | 632×342×685 | 17 | 18 |

YL-SF25



- Electric Stove
- LED lights
- One door can be opened
- The tempered glass on both sides and fixed on door
- Adjustable flame brightness
- Manual control
- Safety thermostat cut off device
- Flame effect can be used independently
- Top &bottom & door & feet is plastic material.
- Body is metal material

| Modle No. | Heat Power | Prouduct Size (mm) | Packing Size (mm) | N.W.(Kg) | G.W.(Kg) |
|-----------|--|--------------------|-------------------|----------|----------|
| YL-SF25 | 900W/1800W for 220V-240V/50Hz; 750W/1500W for 120V/60Hz | 535×280×600 | 615×380×613 | 12.8 | 14.8 |

YL-SF25C



- Electric Stove
- Two door can be opened
- The tempered glass on both sides of the door
- Adjustable flame brightness
- Manual control
- Safety thermostat cut-off device
- Attractive 3-sided open design for full view
- Flame effect can be used independently
- Top &bottom & door & feet is plastic
- Body is metal
- With tip over switch

| Modle No. | Heat Power | Prouduct Size (mm) | Packing Size (mm) | N.W.(Kg) | G.W.(Kg) |
|-----------|--|--------------------|-------------------|----------|----------|
| YL-SF25C | 900W/1800W for 220V-240V/50Hz; 750W/1500W for 120V/60Hz | 535×280×600 | 615×380×613 | 12.8 | 14.8 |